



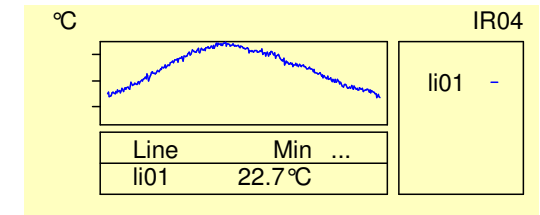
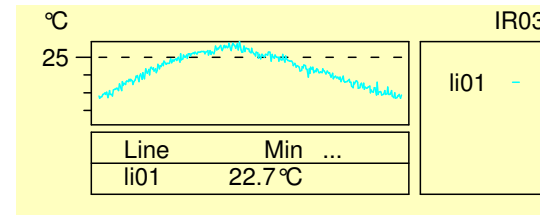
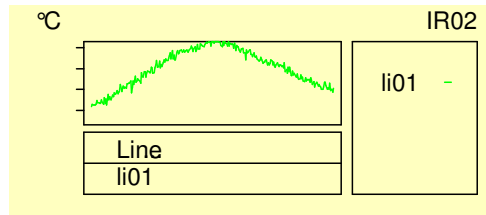
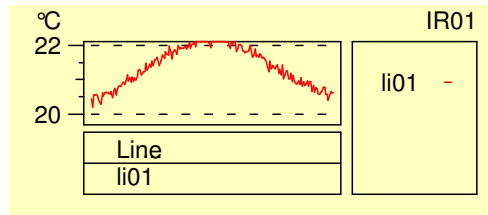
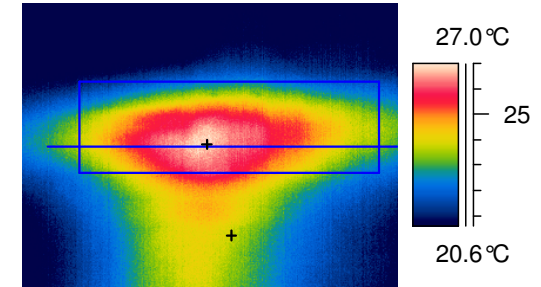
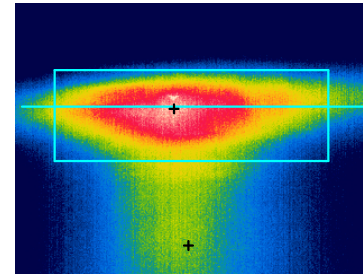
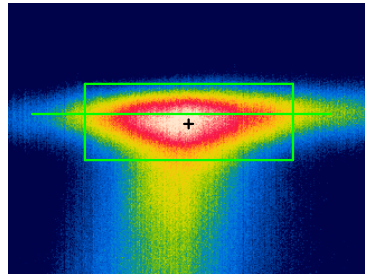
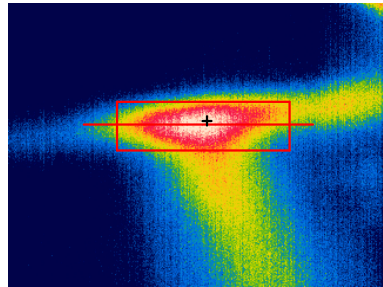
EAST MIDLANDS
THERMAL IMAGING LTD.

**Thermal Imaging Survey
Conducted at**

.....
**On Behalf
of**

.....
21st April 2007

**By
David Farmer**



IR information	Value
Time of creation	09:39:11
Object parameter	Value
Atmospheric temperature	24.5°C
Label	Value
SP01	22.1°C
LI01 : max	22.3°C
AR01 : max-min	2.6°C

IR information	Value
Time of creation	10:07:04
Object parameter	Value
Atmospheric temperature	24.5°C
Label	Value
SP01	24.5°C
LI01 : max	24.6°C
AR01 : max-min	4.4°C

IR information	Value
Time of creation	10:21:01
Object parameter	Value
Atmospheric temperature	24.5°C
Label	Value
SP01	23.3°C
SP02	25.5°C
LI01 : max	25.9°C
AR01 : max-min	5.2°C

IR information	Value
Time of creation	10:34:52
Object parameter	Value
Atmospheric temperature	24.5°C
Label	Value
SP01	23.7°C
SP02	26.7°C
LI01 : max	26.9°C
AR01 : max-min	6.3°C

The 4 images above show how the thermal patterns are increasing over a period of a hour, this indicates that a water leak may be present in this area.